

WHAT TO PUT IN AN EMERGENCY SUPPLY KIT



Water
(1 gallon per person, per day)



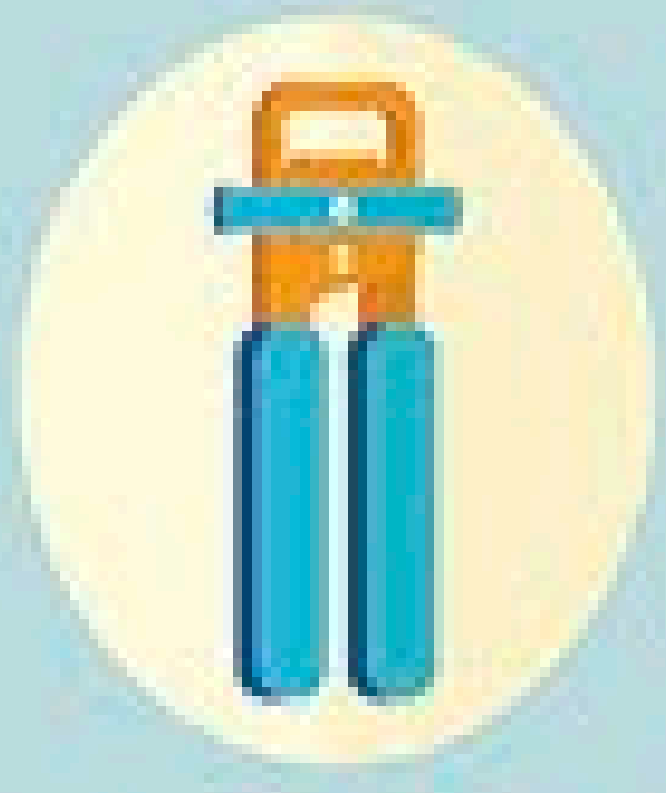
Food
(non-perishable)



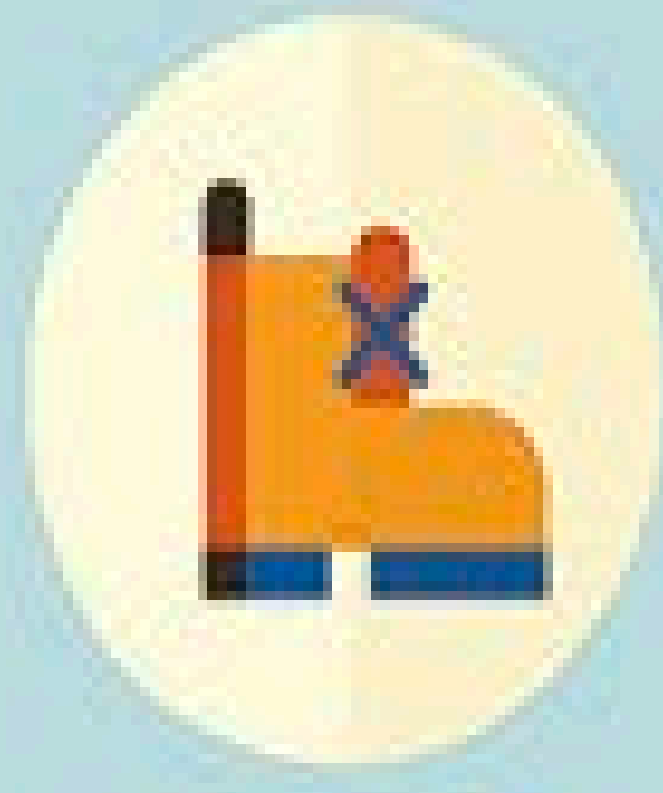
Medications



First aid kit



Can opener



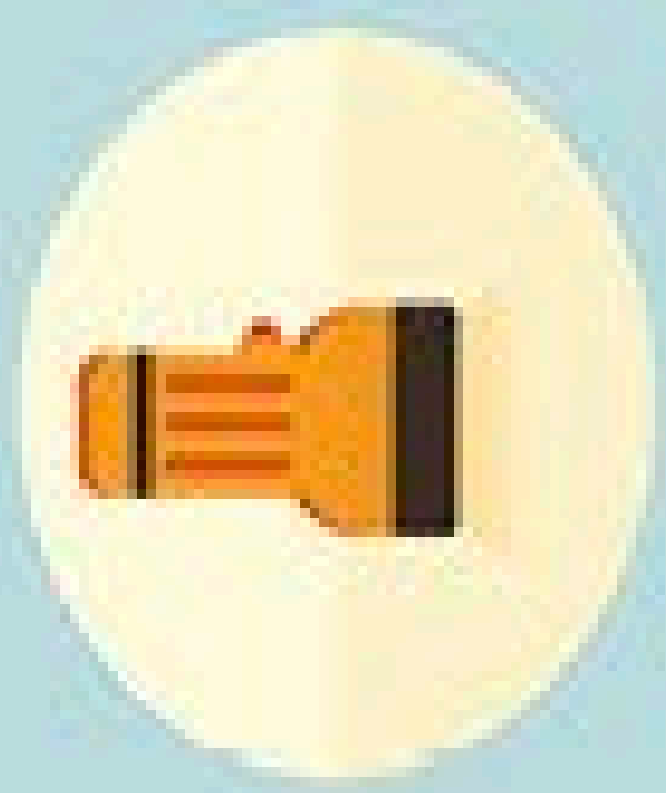
Sturdy shoes



Radio



Extra batteries



Flashlight



Warm clothes



Personal hygiene items



Fire extinguisher



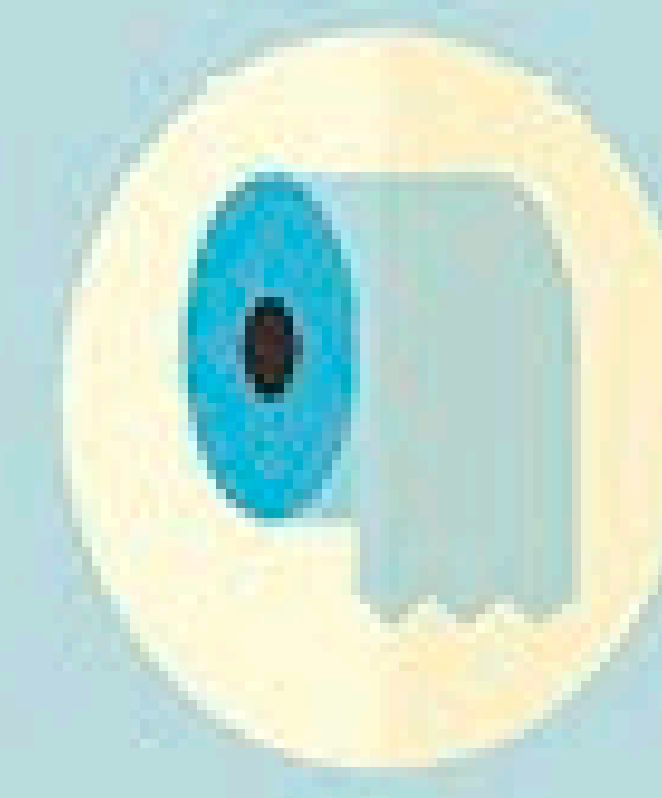
Tools



Pet supplies



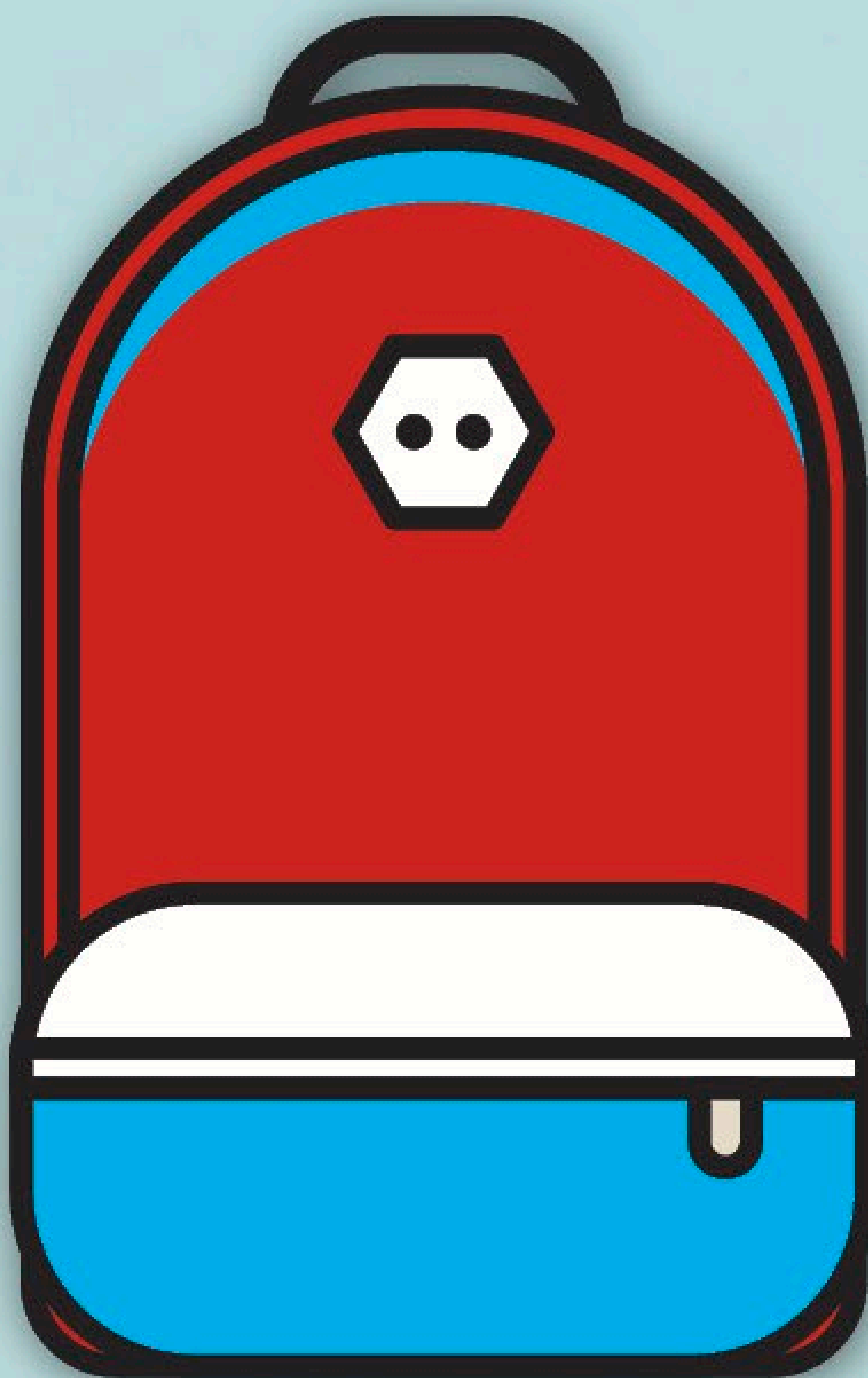
Small bills



Toilet paper



Identification & important documents



! Keep a 7-10 day kit at home – also have smaller kits in your vehicle and at work



CITY OF INGLEWOOD
Office of Emergency Services

P: (310) 412-8840 • E: oes@cityofinglewood.org
W: cityofinglewood.org

Additional Information on Disaster Preparedness

Please visit these informative websites:

www.ready.gov • www.fema.gov • www.redcross.org